

CapaInstaller[®]

OS Deployment

CapaInstaller OS Deployment helps lower total cost of ownership by helping you configure, deploy and maintain Microsoft Windows operating systems. Basically it helps IT organizations, reduce support time and minimize administration costs.

What is CapaInstaller OS Deployment

CapaInstaller OS Deployment is a solution for deploying Windows 2000/XP/Vista and 2003 servers in a managed network environment. For initial deployment, simply boot the computer using PXE or other boot media and enter a computer name. The operating system is then automatically installed from an image on your network without requiring any further user input.

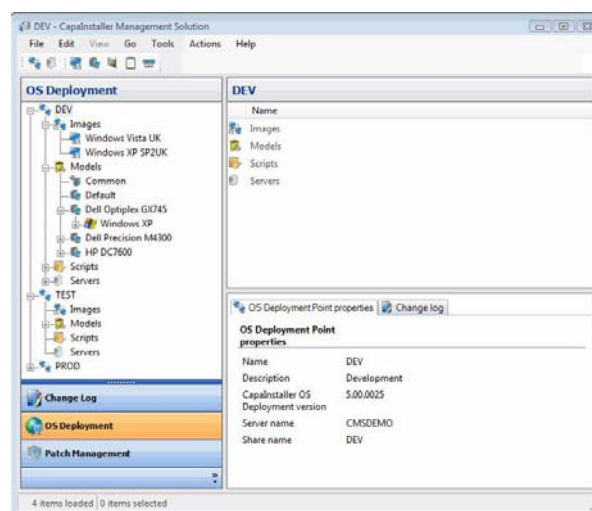
A Comprehensive Configuration Tool

To manage your deployments use CapaInstaller OS Deployment. This powerful tool enables you to create and manage OS Deployment points that include a full Windows 2000/XP/Vista OS image, plus all of the required drivers for each PC model in use at your organization. The tool also helps you to configure PC models and synchronize deployment servers across the organization.

Remote Reinstallation Service

You can easily reinstall the operating system at any time using the CMS Console on any computer. Reinstallation is often the fastest, surest and safest way to restore normal service, e.g. fixing software related problems on a malfunctioning work station. The alternative, trying to isolate and correct a problem, can often take

many hours and still result in a system in which problems remain. When using CapaInstaller OS Deployment, OS installation or reinstall typically takes about 10 minutes, depending on computer and network performance.



The main window of CMS Console.

Integrate with System Management products

Naturally, we recommend CapaInstaller Management Solution, which offers the most thorough integration, but OS Deployment can be integrated with nearly any third-party solution.

When using CapaInstaller Management Solution, OS Deployment integration features include:

Complete Remote Reinstall

Use the CapaInstaller Console to completely reinstall any computer in your network, including the OS and all applications, updates and hotfixes previously assigned to the same workstation.

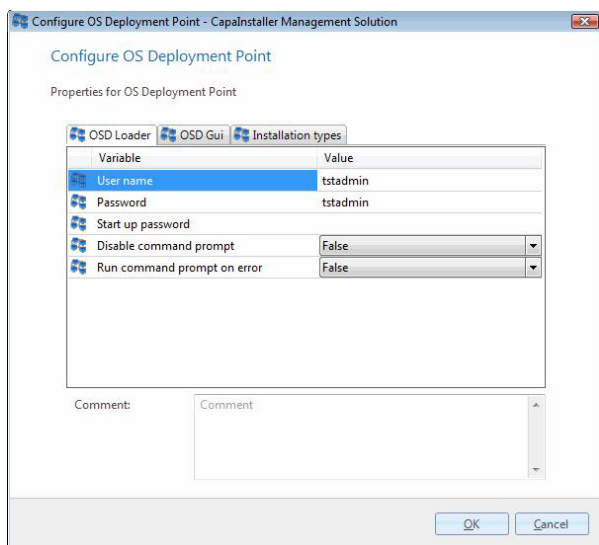


CapaInstaller®

OS Deployment

CapaInstaller Client Distribution

All required CapaInstaller client software can be included with the operating system, thereby ensuring that all clients are immediately prepared for management.



Configuring an OS Deployment Point.

Change Management support

A unique feature of CapaInstaller OS Deployment is the support for change management, with full history on all changes made during daily operations. Combined with the built-in scalability support customers can scale out to worldwide locations while maintaining full operational control of all components. OS Deployment also supports a strong implementation of a tiered change management environment to fully support recommendation in standards like ITIL.

Customer Business Value

CapaInstaller OS Deployment offers the IT department an out-of-the-box solution based upon

well defined processes. IT-administrators will be more efficient with OS Deployment and targets for Service Level Agreements are easier guaranteed.

Problems related to deployment of new PC hardware models and down time caused by reinstallation of Windows are minimized resulting in higher end user productivity.

Client Requirements

The client hardware must have at least 316 MB memory available, not including shared memory, BIOS support for PXE 2.1 is required to utilize PXE boot. When using USB devices to boot OSD, make sure the machine BIOS and the USB device are compatible.

System Requirements

The CapaInstaller System runs on Windows Server 2003 (Including x64 and R2) or newer, DHCP and TFTP Server are required to support PXE boot.

Microsoft SQL Server 2005 is required for CapaInstaller OS Deployment OSD Management module.

Microsoft Gold Certified Partner

CapaSystems has been globally accredited as a Microsoft Gold Certified Partner.

For more information please view our online reference guide on www.capainstaller.com



Information Worker Solutions
ISV/Software Solutions



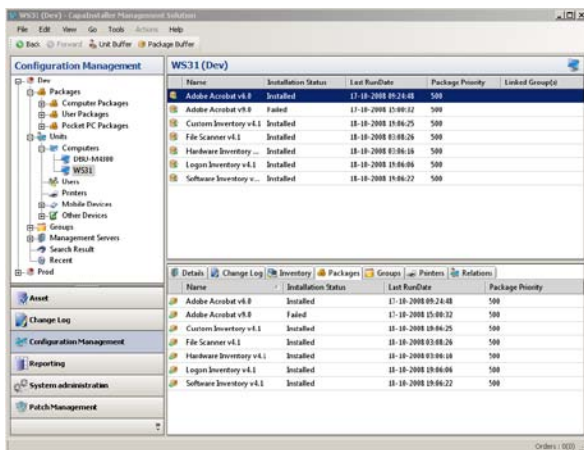
CapaSystems

We optimize and simplify your IT operations

CapalInstaller®

Configuration Management

Use CapalInstaller Configuration Management for centralized packaging, deploying, monitoring and maintaining software installations for all Microsoft Windows based clients, servers and Pocket PCs. The solution can perform advanced software deployment with or without end-user intervention and without requiring IT staff to visit the target clients.



Improved daily operation

CapalInstaller Configuration Management makes it possible to create and maintain secure and stable environments for all users with optimal performance on all computers while reducing the cost and effort required for administration, installation, maintenance and support. Features like printer management, reinstall view and the common console will make it easier to manage the daily operations. Using the power scheme feature you can even minimize the use of power.

Reflect your infrastructure

By using links or groups you can create the relations needed between your configuration items to reflect your infrastructure and thereby improve deployment. Furthermore every action is automatically recorded in a change log ensuring history is available for troubleshooting or reports later on.

Change Management

Use the staged deployment feature to create changes in a controlled and secure environment. You can create stages like development, test and production and approve you packages according to the level of requirements before you move them to the next stage. Thereby you minimize the impact on the business and raise the level of service delivery at the same time.

Release Management

You can distribute and track installations as they are deployed to clients across the network. All jobs are monitored by the system, with detailed status information displayed in the central console and/or sent to a system administrator by e-mail.

The possibility of package schedule with expiration date, package release and execution date makes it possible for you to manage the release of packages according to best practice.

Interactivity with end users and multi-language messaging help provide flexibility and ensure high success rates. Deployment can run in silent, attended (with end-user messaging) or request-log-off mode.

Deployment optimization

Features as Wake-on-LAN, WAN connections and mobile clients through download-before-install, bandwidth regulation and download-resume functionality, HTTP(s) based deployment allowing package distribution, OS reinstallation, and inventory collection through http/https makes it possible to deploy to any of your sites in the most secure and optimized way.

With Network-attached storage (NAS) Support you can use a NAS box as a deployment server. You can push all the needed files to the NAS box from a parent server or point. This feature can also be useful in a workgroup environment where validation is problematic.

Centralized Software Distribution

CapalInstaller is designed to fit into any organization's network structure. Any number of management servers can be established, on almost any Microsoft operating systems, and on almost all hardware. This enables deployment in large, multi-site environments without overloading the network, interrupting high priority traffic or inconveniencing users.

Package Management

CapalInstaller Configuration Management includes all of the tools you need to create software installation packages that will install correctly everywhere, even when distributed to computers with widely varying hardware and software configurations. Streamline your package creation process by using CapalInstaller ezMSI and CapalInstaller



CapaSystems

We optimize and simplify your IT operations

CapaInstaller[®]

Configuration Management

Package Creator, which generates scripted installation packages that deliver success rates as high as 99-100%, even in complex, heterogeneous environments.

CapaInstaller Package Creator

Using the CapaInstaller Package Creator will bring a shorter and more structured development cycle of software packages. The Package Creator has been integrated with various setup formats making it a thought workbench for packaging.

The CapaInstaller Package Creator has also been integrated with Microsoft application Virtualization and Altiris Software Virtualization Solution. Hereby the solution enables customers to publish virtualized applications.

Packages are based on the media (software), an installation procedure and a un-installation procedure. The (un)installation procedures are based on the CapaInstaller Scripting Language which is a vb script extension.

Package Creator and the CapaInstaller client is tested on the following x64 and x86 platforms: Windows XP, Windows 2003, Windows 7, Windows Vista & Windows 2008.

Software Catalog

Not all software installations are mandatory. You can therefore mark optional packages to be listed in a catalog rather than installed automatically. Users can review the catalog at any time and use it to select and install whatever software they need. Each catalog item can be made available to all users or restricted to specific groups.

Integration with DeepFreeze 5.0

CapaInstaller Management Solution has been integrated with Deep Freeze v5.0. When the integration is enabled it is possible to maintain protected computers.

CapaInstaller System

CapaInstaller Configuration Management operates on top of the CapaInstaller System, which is included with the solution and provides the required infrastructure. It works silently and reliably, placing very little demand on its clients. Distributed networks are supported by remote management servers, package synchronization, download and managed bandwidth.

Additional CapaInstaller solutions are easy to add once the system is in place. Simply enter a new license key and the new functionality is instantly available, without any extra installation.

Realtime reports

The Reporting and Queries plug-in, makes it possible to create new reports based on any type of data, or to use some of the predefined reports. By choosing precisely which data to include, using both static and/or dynamic criteria, each report can be extremely concise and focused. CMS integrates with Reporting Services, which makes it possible to view the reports in a browser without even having CMS installed.

Power Management

With the Power Management feature you can minimize the PC's power consumption, by setting up specific rules that determine when the PC's in your organization should turn off, go to sleep or the like. It is possible to manage the clients in different groups with different work habits, so that the Power Management does not interfere with the work of the end-user.

Client Requirements

The CapaInstaller Client must be installed on each machine where the generated packages will run. Minimum requirements: Windows 2000 SP3

Server Requirements

The CapaInstaller System runs on Windows Server 2003 (Including x64 and R2) or newer, Microsoft SQL Server 2005 or newer

Microsoft Gold Certified Partner

CapaSystems has been globally accredited as a Microsoft Gold Certified Partner.

For more information please view our online reference guide on www.capainstaller.com



Information Worker Solutions
ISV/Software Solutions



CapaSystems

We optimize and simplify your IT operations

CapaInstaller[®]

Patch Management

CapaInstaller Patch Management provides controlled deployment of Microsoft hotfixes and up-to-date security reports for all managed clients. The solution integrates with Microsoft Windows Server Update Services (WSUS), which automatically downloads the latest updates as soon as they become available from Microsoft.

Centralized Security Management

CapaInstaller Patch Management offers a centralized and controlled place for deploying hotfixes. Updates can be managed for the test and production environment in an easy-to-use interface. When an update has been approved for test environment and has been successfully tested the update(s) can be deployed to the production environment.

CapaInstaller Patch Management makes it easy to roll out Microsoft updates to every client in the network. Although newer versions of Windows are able to update themselves over the Internet or from the local WSUS server, it typically leaves too much responsibility in the hands of end-users; it bypasses the desktop management system, produces untested configurations and results in an arbitrary distribution of updates. CapaInstaller Patch Management helps address these problems by enabling organizations to integrate CapaInstaller with WSUS.

Ease-of-use

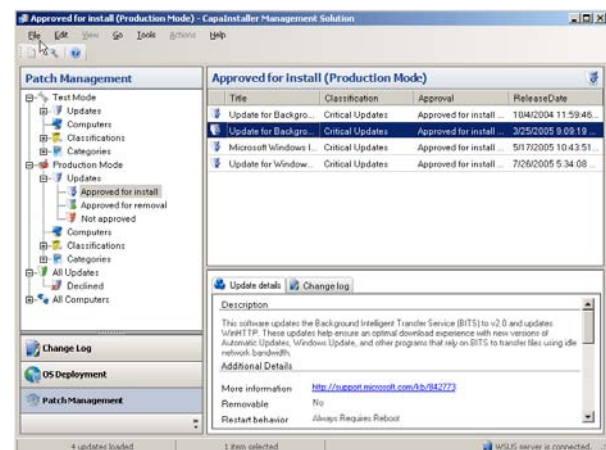
With this new view it is now possible to drag and drop updates to a designated Mode for a specific approval. Likewise, the drag and drop functions are also possible for computers when assigning computers to different computer groups.

Always up-to-date

All updates and computers are automatically synchronized between WSUS and the CapaInstaller database every hour, which ensures that the Patch Management console is up-to-date.

Because CapaInstaller Patch Management integrates with WSUS from Microsoft, the solution automatically receives all updates and patches for many common Microsoft applications, including Windows, Office and Internet Explorer, as soon as they are released.

To eliminate manual work, it is possible to set an option that assigns all the new computers to the production environment. This ensures that the administrators do not have to assign newly arrived computers, and that the computers are up to date with all updates that have been approved for production.



WSUS enables per default local hotfix deployment. CapaInstaller extend the feature set with easy configuration and deployment of the Windows Update Agent, user friendly reboots, minimal server maintenance requirements, improved security and extended reporting capabilities

Test & Release Procedure

New operating system patches and other updates should never be distributed before they have been proven to be compatible with all mission-critical applications. CapaInstaller Patch Management therefore enables IT managers to limit the distribution of newly downloaded patches to a test environment. Once tested and approved, managers can then promote a given patch to all



CapaSystems

We optimize and simplify your IT operations

clients in the organization with just one click. This task can also be automated supporting a typical patch strategy.

Hotfix Checking, Inventory & Reports

CapaInstaller Patch Management includes a Hotfix Inventory module, which provides a full overview of all patches applied to each client. The solution furthermore shows when a client is lacking a recommended patch by checking the client's current configuration against the latest recommendations from Microsoft, delivered via WSUS. You can view this information onscreen or generate printed reports using the CapaInstaller Reporting plug-in.

Client Requirements

The CapaInstaller Client must be installed on each machine where the generated packages will run. Minimum requirements: Windows 2000 SP3

Server Requirements

The CapaInstaller System runs on Windows Server 2003 (Including x64 and R2) or newer, Microsoft SQL Server 2005 or newer

Microsoft Gold Certified Partner

CapaSystems has been globally accredited as a Microsoft Gold Certified Partner.

For more information please view our online reference guide on www.capainstaller.com



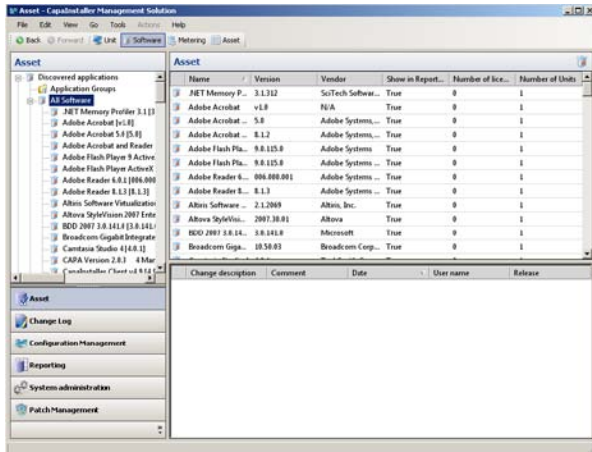
Information Worker Solutions
ISV/Software Solutions



CapaInstaller®

Asset Management

Having a centralized console and one common configuration management database you can work safely and structured with the CapaInstaller Asset Management solution providing you with a complete overview of all software, hardware, devices, and other elements in use throughout your network.



Complete asset and inventory overview

With this solution it is possible to manage the company's assets including software, hardware, PDA's, printers and scanners. It is also possible to create custom device types for maximum flexibility.

Software Management

Software inventory details include a full list of all versions of software installed on any Windows server or Windows client in the network. File based inventory, will combined with standard inventory give a more complete picture of installed software on the servers and the computers.

Software Inventory works both for Citrix Terminal servers and Windows based operating systems. The software inventory module on Citrix register published applications and which uses has been granted access to these.

Application groups for license management

An application group is a logical collection of all software versions that is related to the same software license contract. It is possible to define the number of licenses for a group of applications, or a single application. Licenses are defined for departments or enterprises. The system keeps a running total of the number of licenses that are installed and compares this to the number you have purchased. A compliancy report can show which licenses are breached.

Software Metering

Using metering you can keep track of when each program was last used on each client, by whom and for how long. Software suite components such as Word, Excel and Outlook can even be metered separately to determine if the correct suite is installed for each user or if a smaller suite or single application would do. Metering enables you to see when licenses should be removed from clients where they are not being used and transfer them to where they are needed rather than spend money on new ones.

Query based groups

With query based application and metering groups, it is possible to make dynamic self updating groups. Licenses can be defined for a specific version, or from that version and up. The license information will be collected, even if an already installed version of a product is being updated.

Disallowed Applications

To help enhance security and maintain productivity, administrators can forbid specific applications from being run on client computers. If a user tries to execute a forbidden application, the CapaInstaller Agent will terminate the application.

User Inventory and Logon History

Tracking are being kept of each individual network user. Details such as: logging user name, domain, primary workstation, login times, etc. can be collected for all users.



CapaSystems

We optimize and simplify your IT operations

CapaInstaller[®]

Asset Management

Hardware Inventory

Hardware inventory enables administrators to check the components of any computer or server without needing to travel to the physical machine or open its enclosure. Hardware inventory includes extensive details about each computer, including: system BIOS, serial number, System type, RAM size, OS details, network MAC address, hard-disk size and free space, graphic card details, port selections, peripherals and more.

Expanded Asset Management

You can define, view and enter customized details on any asset. Use this feature to store information such as supplier, warranty dates, location, prices, etc. for all of your network assets. In addition, any type of file can be attached to any item, thereby making it easy to find service agreements, PDF manuals, license agreements, support details and more.

Create Custom Inventories

In addition to the standard modules, Asset Management includes customizable inventory modules that you can modify with your own script commands, to collect any type of information about each client. For example, custom scripts can be developed to report specific registry values or to deduce the department a machine belongs to based on 3rd party information (AD, HR).

Realtime reports

The Reporting and Queries plug-in, makes it possible to create new reports based on any type of inventory data, or to use some of the predefined reports. By choosing precisely which data to include, using both static and/or dynamic criteria, each report can be extremely concise and focused. CMS integrates with Reporting Services, which makes it possible to view the reports in a browser without even having CMS installed.

Support for Citrix Terminal Server

For organizations using Citrix Terminal Server, CapaInstaller Asset Management is able to moni-

tor published applications. For each of the applications start, stop and user credentials are logged.

CapaInstaller Platform & Modules

CapaInstaller Asset Management operates on top of the CapaInstaller System, which is included and provides the required infrastructure. Additional CapaInstaller solutions are easy to add when the infrastructure is in place. An agent program running on each client regularly submits updated inventory details to a central place, where a service collect, organizes and processes the data to the SQL Server database. The database makes it available for use in the Asset Management and Reporting plug-in.

Client Requirements

The CapaInstaller Client must be installed on each machine where the generated packages will run. Reporting services must be installed. Minimum requirements: Windows 2000 SP4

Server Requirements

The CapaInstaller System runs on Windows 2000 SP4 or newer, Microsoft SQL Server 2005 or newer

Microsoft Gold Certified Partner

CapaSystems has been globally accredited as a Microsoft Gold Certified Partner.

For more information please view our online reference guide on www.capainstaller.com



Information Worker Solutions
ISV/Software Solutions



CapaSystems

We optimize and simplify your IT operations

CapalInstaller[®]

Package Creator

CapalInstaller Package Creator is a rapid development tool for generating software installation packages. The resulting packages are optimized to ensure the highest possible success rate with little or no end-user interaction, thereby maximizing the benefits of using a centralized software distribution platform.

Package Creator: Efficient Distribution

Package Creator provides a streamlined workflow, a standardized script format and advanced pre-built installer-script functions, so even complex software distribution and update tasks can be designed quickly and reliably. Compared to the usual technique of writing complex, customized scripts for every new installation project, Package Creator provides:

- An easy-to-use interface that minimizes development time while ensuring thorough scripting.
- A common development environment, which creates scripts that are easy to understand and easy to share between authors.
- Thoroughly tested scripting functions that guarantee the highest possible success rate
- Detailed log files listing all distribution actions, making it easy to locate installation problems.
- An uninstall feature that makes it easy to remove packages from clients
- Optional interactivity and end-user messaging to help provide flexibility and ensure high success rates.

**Niels Rossen, Senior IT Engineer,
LEGO Koncernen:**

"Using CIPC saves us a lot of time while we are also guaranteed homogenous, quality packages."

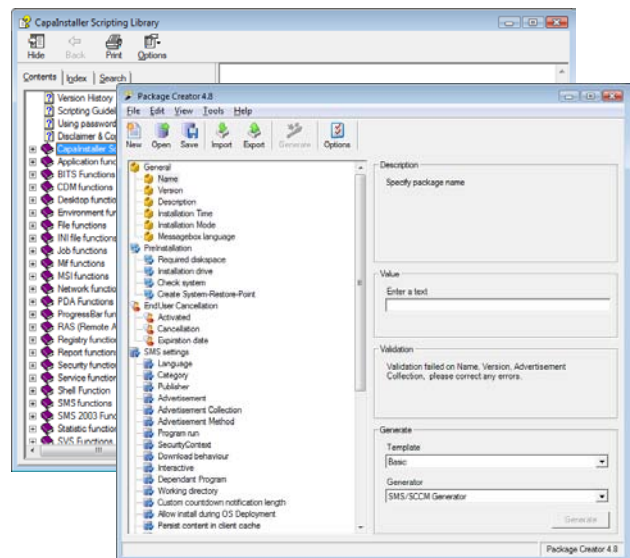


Fig. 1: CapalInstaller Package Console and Scripting Library.

New features in Package Creator 4.9

- Package Creator 4.9 now supports Microsoft SoftGrid 4.2 and Microsoft Application Virtualization 4.5. The integration is based on guidelines from Microsoft and general best practices.
- Updated CapalInstaller Scripting Library.
- Windows x64 support.
- Support for CMS4

The CapalInstaller Scripting Library

Package Creator scripts use the Visual Basic scripting language, which is familiar to most developers and therefore easy to customize. The scripts are relatively short and easy to understand thanks to the CapalInstaller Scripting Library (formerly known as CapaLib), which provides a powerful set of pre-made functions designed by experts in software installation.

CapalInstaller Script Editor

The included CapalInstaller Script Editor program provides a flexible environment for customizing your generated scripts. It features auto-completion, syntax colour coding, scripting help and other coding features targeted for CapalInstaller scripts.

CapaInstaller[®]

Package Creator

Key Features:

- Includes several pre-built templates for generating packages to install all kinds of applications.
- Supports MSI packages and special MSI features including patches (.MSP) and transform files (.MST).
- Helps to create customized maintenance scripts using templates and CapaInstaller Scripting Library functions.
- Creates detailed installation log files.
- Generates scripts with both pre- and post-installation client checks.
- Sets up messaging and end-user interaction in multiple languages.
- Provides extra support for WAN connections and mobile clients through download-before-install, bandwidth regulation and download-resume functionality.
- Intelligent user script handling.
- Generates packages that can run in silent, attended or request-log-off mode.
- Packages can automatically create a system-restore point, enabling clients to return to the last-known good configuration if needed.

Support of leading software virtualization products

CapaInstaller Package Creator makes it possible to develop packages to Microsoft Application Virtualization (SoftGrid), Altiris Software Virtualization Solution and also Thinstall Application Virtualization Solution.

The development of packages is as easy and standardized as developing MSI packages. The packages can be distributed with CapaInstaller Management Solution, SMS 2003 or SCCM 2007.

Tested and Approved by Microsoft

CapaInstaller Package Creator has been tested and approved by Microsoft.

Platform Integration

CapaInstaller Package Creator is intended for use as part of a managed software distribution platform. It provides full integration with CapaInstaller Management Solution, Microsoft System Management Server 2003 and Microsoft System Center Configuration Manager.

Supported Platforms

The CapaInstaller Client must be installed on each machine where the generated packages will run. The Client runs on Windows 2000, 2003, 2008, Windows XP, and Windows Vista with Microsoft Internet Explorer 5.0 SP2 or later. The client will run on x32 and x64 platforms.

Microsoft Gold Certified Partner

CapaSystems has been globally accredited as a Microsoft Gold Certified Partner.

For more information please view our online reference guide on www.capainstaller.com



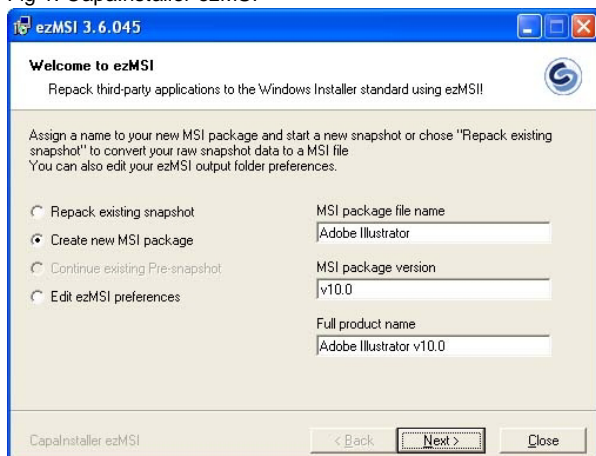
Information Worker Solutions
ISV/Software Solutions

CapaInstaller Package Creator 4.9 Help File is available at www.capainstaller.com by choosing the menu Online Help.

One of the most effective ways of lowering the total cost of ownership (TCO) of your information technology infrastructure is to use managed software distribution. An easy and efficiently packaging is the first crucial step to ensure successful software distribution.

ezMSI from CapaSystems enables you to generate Windows Installer (MSI) packages for any application, regardless of the installer technology used by the original manufacturer. A wizard guides you “step by step” through the entire packaging process without any use of scripting.

Fig 1: CapaInstaller ezMSI



The ezMSI Advantage

MSI is the preferred Microsoft standard for creating software installers that can function either locally or over a network and managed centrally.

ezMSI Features

- Repackages any application to the Windows Installer (MSI) standard
- Creates MSI packages without scripting
- Built-in package customization tools
- Supports advanced MSI features
- Creates advertisement shortcuts for user “on-demand installation”
- Install on Demand
- Uninstall and Repair.

MSI technology is extra powerful because it is built into the operating system. This enables the system to monitor the installation and removal of all MSI software resources (including shared resources) and to ensure that all of the resources required by installed applications will be present when needed.

Easy and efficiently Packaging

With the ezMSI you achieve a low cost in packaging tasks and a low cost keeping the software on every workstation completely up to date. EzMSI has all the timesaving functionality you need to package your software easily, with high speed and accuracy – Resulting in high quality MSI packages ready for deployment.

ezMSI Benefits

- Ensure a standard set of install options for all workstations
- Make your managed software-distribution platform even more effective
- Simple and silent installs eliminate user confusion and errors during installation
- Safe and thorough uninstalls
- Take advantage of advanced MSI features with non-MSI applications
- Package-customization tools can give better control than the original installer.

Customize Your MSI Packages

If you want to inspect and/or fine-tune your packages, the ezMSI provides comprehensive tools for doing so. You are able to view the complete contents of the proposed MSI package, including all files, file locations, registry updates and INI-file updates. Graphical tools are provided that enable you to add, remove or modify any of these to help ensure a perfect installation every time.

Installation packages created by ezMSI contain all of the settings and options established by the IT manager, so nothing is left to chance when running the installation on a client.



Deployment of ezMSI Packages

- Install from Software distribution platform
- Install from Active Directory
- Install from Network
- Install from CD-Rom.

For Even More Control

CapaInstaller Package Creator: Advanced scripting and automated installation packages.

The Package Creator is a rapid development tool for generating software installation packages. The resulting packages are optimized to ensure the highest possible success rate with little or no end-user interaction, thereby maximizing the benefits of using a centralized software distribution platform.

CapaInstaller Management Solution: Optimize and simplify Your IT Operations with CapaInstaller Management Solution

By using CapaInstaller Management Solution you will lower the total cost of ownership by managing, deploying and maintaining Windows-based clients & servers more efficient. CapaInstaller offers an easy-to-use solution that provides Operating System Deployment, Software Distribution, Patch Management, Asset Management and license metering.

Microsoft Gold Certified Partner

CapaSystems has been globally accredited as a Microsoft Gold Certified Partner.

For more information please view our online reference guide on www.capainstaller.com



Information Worker Solutions
ISV/Software Solutions

